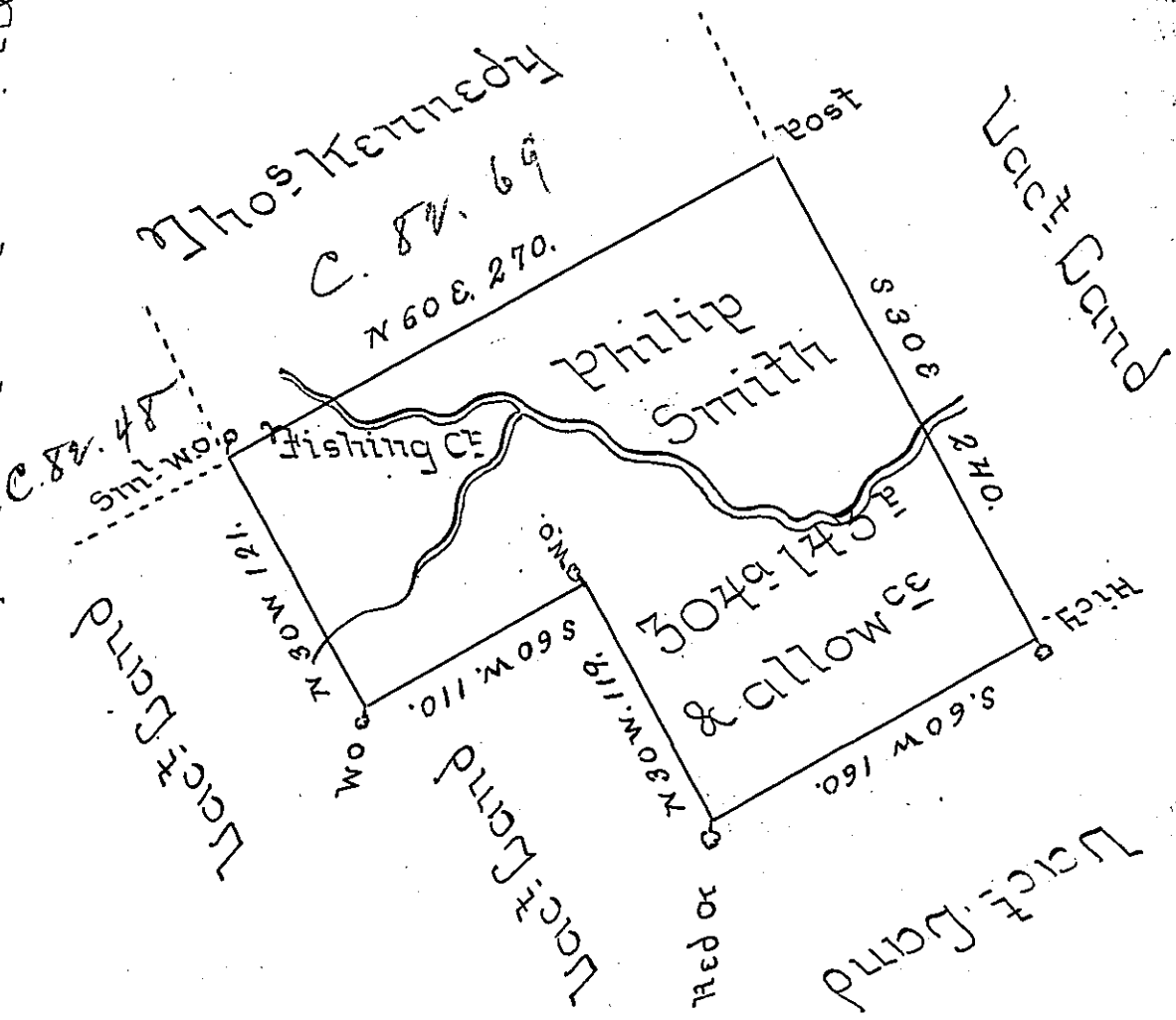


This note attached
 Doct^r Morgan Desires that no Patent
 Issue for this Land to Smith or his Assigns
 Alleging that he hath Prior Orders for
 the same or part thereof

29th May 1774



A Draught of a Tract of Land Called Barley Farm
 situate on Fishing Creek in the County of Cum-
 berland Surveyed the 26th day of October 1769
 to Philip Smith in pursuance of an Applicati-
 on & Order of Survey No 3500 Dated the 31st day
 of Aug^t 1760 (l.) Containing Three hundred & four
 acres & 143¹/₂ ac & allow^{ce} of 6¹/₂ Cent.

Chas Lukens DS

To John Lukens Esq^t
 Surveyor-General

IN TESTIMONY that the above is a copy of the original remaining on file in
 the Department of Internal Affairs of Pennsylvania, made
 conformably to an Act of Assembly approved the 16th day of
 February, 1833, I have hereunto set my Hand and caused
 the Seal of said Department to be affixed at Harrisburg,
 this seventh day of February 1905.

Lucas P. Brown
 Secretary of Internal Affairs.